



## NORTH LITTLE ROCK WASTE WATER UTILITY

February 6, 2018

RECEIVED

FEB 07, 2018

*En 10-24*

Mr. Richard Healey  
ADEQ Branch Manager, Water Division  
5301 Northshore Drive  
North Little Rock, AR 72118-5317

**RE: CAO LIS No. 10-218**

Dear Mr. Healey:

On December 29, 2010, The North Little Rock Waste Water Treatment Committee (NLRW) entered into a Consent Administrative Order (CAO) with the overall goal of eliminating sanitary sewer overflows (SSOs). The CAO contained requirements that can generally be summarized in four main tasks: Masterplan, Sewer System Evaluation Survey (SSES), Capital Improvements Plan (CIP) and Remedial Measures Plan. A voluntary civil penalty was also assessed and payment was completed in accordance with the required schedule.

A Masterplan was completed in August 2011 which included a "Capacity, Management, Operations and Maintenance Self-Assessment Report", "Treatment Facilities Evaluations", "Pumping Station Design and Equipment Condition Adequacy Evaluation", "Flow Monitoring concurrent with rainfall data collection", "Hydraulic Model", and "SSES Recommendations."

NLRW's geographical information system was used to subdivide the collection system into sewersheds, and historical SSO data was used to prioritize the SSES fieldwork. Total SSES fieldwork completed 2012 through 2017 includes:

Smoke Testing	2,068,347 LF
Manhole Inspections	8,366 Ea.
Dye Testing	328 Ea.

The NLRW has systematically worked through the CIP developed in the Masterplan 2011 adding projects as appropriate. Following is a summary of CIP projects and costs by category:

	<u>QUANTITY</u>	<u>CONSTRUCTION (\$)</u>
Treatment Plant Modifications	4 Ea.	\$11,620,966
In-situ Pipeline Rehabilitation	334,572 LF	\$25,900,961
Pump Station Modifications or Upgrades	6 Ea.	\$ 6,419,276
Miscellaneous Gravity Collection Improvements	13,719 LF	<u>\$ 4,796,835</u>
		<b>\$48,738,038</b>

Highlights of the Remedial Measures Plan are as follows:

<u>ACTIVITY</u>	<u>QUANTITY</u>
TV Crew Production increased 320%	483,594 LF/Yr.
Cleaning Crew Production increased 280%	2,041,119 LF/Yr.
Treatment Plant Generators Installed	7 Ea.
Pump Station Emergency Response Pump Connections	42 Ea.
Pump Station Generators Installed	28 Ea.
Pump Station SCADA Installations	68 Ea.
Public Education Presentations ("Maintain YOUR Drain")	5 to 8 /Yr.
Public Education Mailers ("Maintain YOUR Drain")	184,500/Yr.
Collection System Repairs Requiring Excavation	600 /Yr.
Manhole Rehabilitation (Interior repair and/or grout)	1,982 Manholes/Yr.

Implementation of remedial measures and capital improvements have resulted in a reduction in SSOs from 21.4 SSOs/100 miles in 2011 to 4.7 SSOs/100 miles of pipeline in 2017. Therefore, we respectfully request your consideration to terminate CAO LIS No. 10-218 based on the successful reduction of SSOs and on the corrective actions taken to fully comply with the CAO.

A copy of the "2017 End of Year Report" is attached for your review.

We are available to answer questions and/or make a presentation to ADEQ staff featuring details of the programs and corrective actions which have contributed to improvements in the NLRW collection and treatment systems.

Sincerely,



Marc E. Wilkins, PE, Director

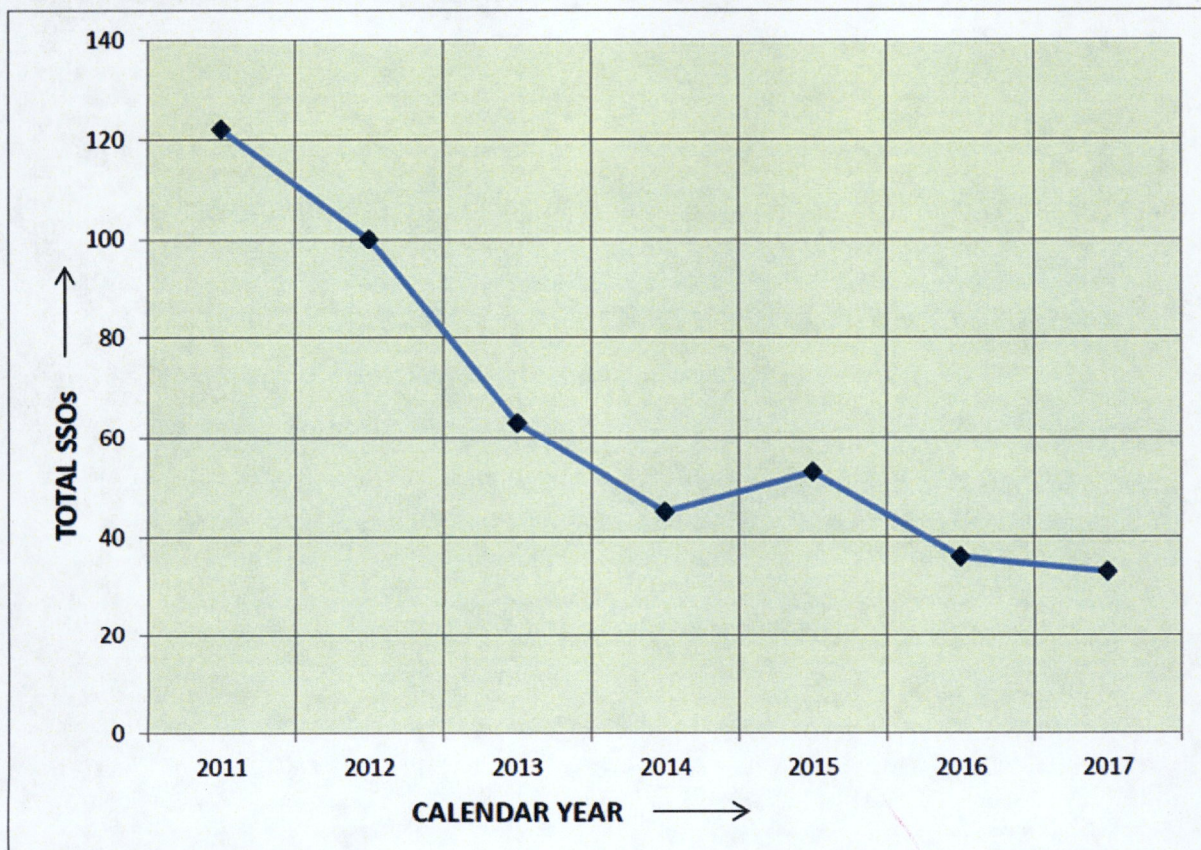




# North Little Rock Wastewater

P. O. Box 17898, North Little Rock, AR 72117-0898

## 2017 End of Year Report



Consent Administrative Order LIS 10-218





## **PREFACE**

North Little Rock Wastewater (NLRW) submitted a progress report to ADEQ on June 22, 2017 documenting that all of the corrective actions listed in the Maumelle Water Management Corrective Action Plan (CAP), dated November 18, 2016, have been completed. As a result, ADEQ issued a response indicating that the CAP was closed, that "NLRW shall maintain the corrective actions taken to comply with the CAP," and that future progress in the Maumelle wastewater system may be reported in the NLRW Annual Report.



# **North Little Rock Wastewater 2017 End of Year Report**

## **Consent Administrative Order LIS 10-218**

### ***Table of Contents***

#### **1. Wastewater Master Plan**

##### **A. Milestone Schedule**

##### **B. Capital Improvements Plan (CIP)**

- i. Treatment Plant Projects
- ii. Pipeline Rehabilitation Projects
- iii. Pump Station Projects
- iv. Miscellaneous Gravity Collection Improvements

##### **C. Sewer System Evaluation Survey (SSES)**

##### **D. SSES, Pumping Station, Capacity Assessment, Hydraulic Model Evaluation Report**

##### **E. Collection System and Wastewater Treatment Plant Remedial Measures Plan**

- i. Increase production of TV and cleaning crews.
- ii. Increase production by adding additional crews or personnel.
- iii. Provide emergency response connections and Supervisory Control and Data Acquisition (SCADA) at pump stations and treatment plants.
- iv. Identify areas subject to building/private property backups.
- v. Public education
- vi. Treatment plant stormwater runoff protection
- vii. Secure Funding for Capital Improvement Projects.
- viii. Point Repairs
- ix. Manhole Repairs



**2. Civil Penalty Payment Summary**

**3. Notifications of Deficiencies**

**4. Compliance Delays**

**5. Certification**

**Appendix**

A. Annual Overflows by Category

B. SSO Locations 2017

C. 2017 End of Year Work Recap Report (Collection Systems)

D. Collection System Rehabilitation



# North Little Rock Wastewater 2017 End of Year Report

## Consent Administrative Order LIS 10-218

Attn: Alan Anderson, Enforcement Analyst  
Water Enforcement Division  
Arkansas Department of Environmental Quality

In accordance with the requirements of Consent Administrative Order LIS 10-218 (CAO), Order and Agreement, Paragraph 3, Reporting, the eighth Annual Report was due and was submitted by February 1, 2018.

### 1. Wastewater Master Plan

#### A. Milestone Schedule

<u>Date</u>	<u>Milestone</u>
• Feb. 1, 2011	First Annual Report due
• Feb. 10, 2011	Effective date of Order
• Mar 10, 2011	Cross Connection Certification due
• Mar. 10, 2011	First Penalty Payment due (\$4,375.00)
• Apr. 25, 2011 – Feb. 25, 2013	Monthly Penalty Payment due (\$4,375.00/Mo.)
• Feb. 1, 2012 – Feb. 1, 2021 Or until closure of this CAO	Annual Report due

#### B. Capital Improvements Plan (CIP)

Following is a listing of projects scheduled or completed as part of the Capital Improvements Plan recommendations from the 2011 Master Plan indicating progress made to date.



i. Treatment Plant Projects

FACILITY	PROJECT NAME	\$	% COMPLETE	DATE
Faulkner Lake	Modifications to Influent Pump Station	\$2,106,883	100%	5/18/2014
Faulkner Lake	Phase III STP Modifications	\$3,554,543	100%	12/1/2015
Five-Mile Creek	Wastewater Treatment Plant Modifications 2013	\$5,343,313	100%	7/14/2014
Faulkner Lake	Maintenance and Emergency Equipment Storage Facilities	\$616,227	100%	9/12/2014
TOTAL \$		\$11,620,966		

ii. Pipeline Rehabilitation Projects

PROJECT NAME	METHOD	LINEAL FT	\$	% COMPLETE	DATE
2012 Cured In Place (CIPP) Rehabilitation	CIPP	9,942	\$393,900	100%	08/31/12
2013 Cured In Place (CIPP) Rehabilitation	CIPP	34,808	\$1,614,620	100%	05/31/15
Lakewood Basin CIPP 2015 Rehabilitation	CIPP	29,502	\$1,327,905	100%	06/30/16
Lakewood Basin Pipe Bursting 2015 Rehabilitation	Pipe Bursting	24,634	\$1,849,561	100%	11/08/16
E. Levy Basin Pipe Bursting Rehabilitation 2016	Pipe Bursting	19,323	\$1,659,056	100%	05/19/17
Baring Cross Basin CIPP 2016 Rehabilitation	CIPP	22,832	\$1,747,836	89%	12/31/17
Baring Cross Basin Pipe Bursting 2016 Rehabilitation	Pipe Bursting	51,800	\$4,069,183	68%	12/31/17
W. Levy/212 Basin CIPP 2016 Rehabilitation	CIPP	26,359	\$1,642,023	0%	12/31/17
W. Levy/212 Basin Pipe Bursting 2016 Rehabilitation	Pipe Bursting	24,930	\$2,146,877	0%	12/31/17
Lower Riverside Interceptor	CIPP/SL	4,345	\$4,400,000	Design	12/31/17
South Levy/Indian Hills CIPP 2017 Rehabilitation	CIPP	47,323	\$2,250,000	Design	12/31/17
South Levy/Indian Hills Pipe Bursting 2017 Rehabilitation	Pipe Bursting	38,774	\$2,800,000	Design	12/31/17
TOTAL		334,572	\$25,900,961		

iii. Pump Station Projects

PROJECT NAME	\$	% COMPLETE	DATE
Shillcutt Pump Station Modifications	\$5,166,843	100%	10/23/14
2013 Auxiliary Generators and Transfer Switches	\$392,922	100%	07/23/14
2014 Auxiliary Generators and Transfer Switches	\$191,995	100%	12/31/14
Oakbrook/Manor Drive Pump Station Upgrade	\$11,392	100%	08/01/16
3306 E. 10th Street Pump Station and Force Main	\$369,713	100%	12/31/17
2017 Auxiliary Generators & Transfer Switches	\$286,411	100%	12/31/17
TOTAL \$	\$6,419,276		



iv. Miscellaneous Gravity Collection Improvements

The Capital Improvements Plan included a line item for miscellaneous gravity system improvements. These are projects identified during the flow monitoring and hydraulic modeling phases of the Masterplan. Staff identified the projects with the highest priority as follows.

PROJECT NAME	\$	% COMPLETE	DATE
Sediment Removal (FL-P1-SR)	\$290,000	0%	12/31/17
Cedar Street Sewer Improvements	\$220,000	*	12/31/17
Gravity Pipe Replacement (FL-GS02)	\$1,300,000	0%	12/31/17
Gravity Pipe Replacement (FL-GS03)	\$1,100,000	0%	12/31/17
White Oak Interceptor Phase II	\$4,796,835	100%	12/31/17
<b>TOTAL \$</b>	<b>\$7,706,835</b>		
<i>* Will be started following final stabilization of the landslide by others.</i>			

C. Sewer System Evaluation Survey (SSES)

Following is a summary of SSES fieldwork completed to date.

SUMMARY OF SSES FIELDWORK

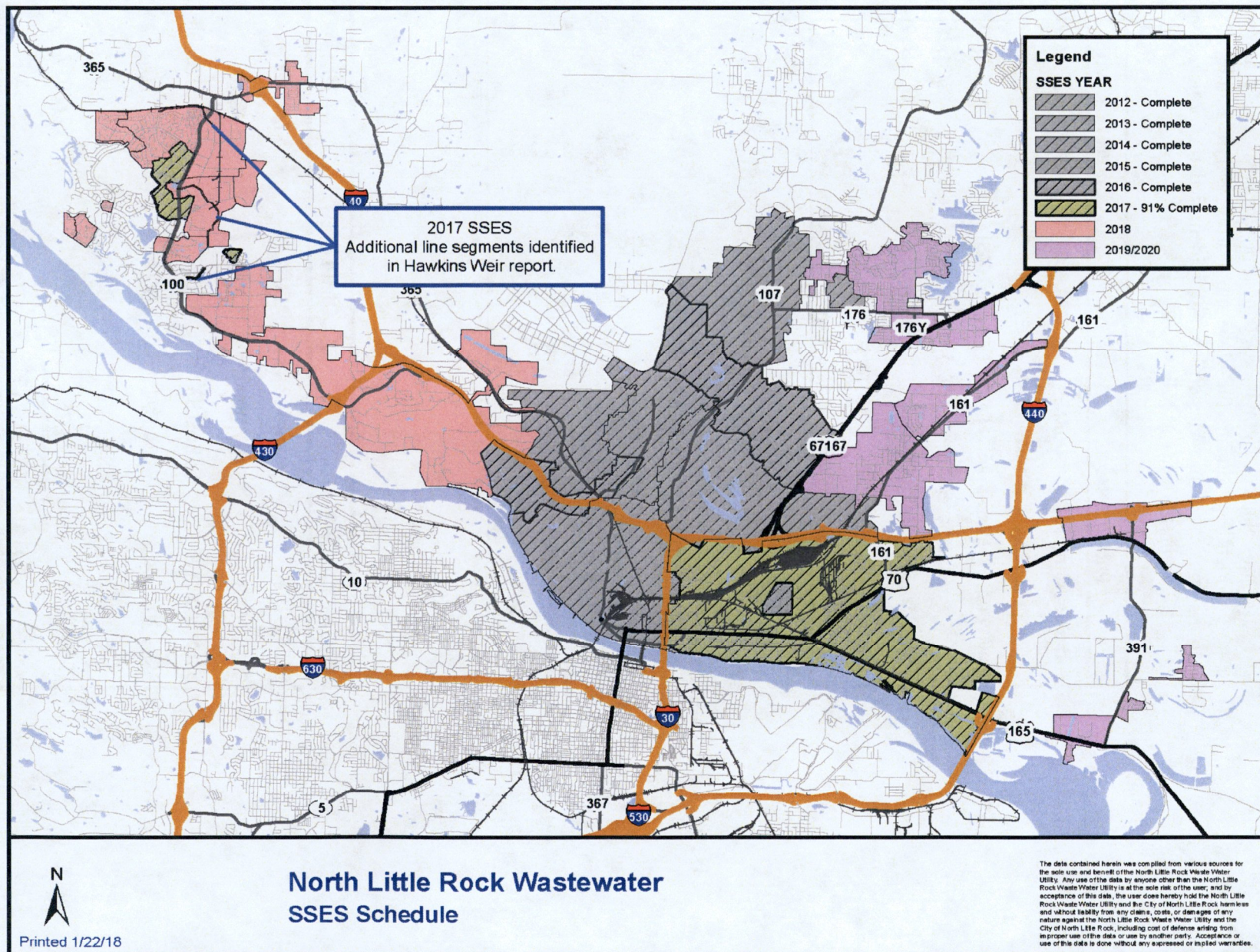
Project Name	Smoke Testing			Manhole Inspections			Dye Testing			CCTV
	Quantity (LF)	Defects (EA)	I/I (mgd)	Quantity (EA)	Defects (EA)	I/I (mgd)	Quantity (EA)	Defects (EA)	I/I (mgd)	Quantity (L/F)*
2012 SSES (Levy Area)	205,569	256	0.539	571	633	0.354	50	42	1.567	276,870
2013 SSES (Lakewood Area)	308,152	945	0.625	641	566	0.351	64	49	0.843	229,503
2014 SSES (Baring Cross and Oakbrook SID)	340,896	1,238	2.424	1,636	1,515	0.846	81	70	2.42	317,521
2015 SSES (West Levy and District 212)	378,056	585	0.74	1,762	1,546	0.958	56	30	0.835	544,811
2016 SSES (S Levy, Indian Hills and Dixie)	385,530	499	0.442	1,763	2,187	1.448	33	24	0.271	437,809
2017 SSES (Rose City)	450,144			1,993			44			483,594
<b>TOTAL</b>	<b>2,068,347</b>	<b>3,523</b>	<b>4.77</b>	<b>8,366</b>	<b>6,447</b>	<b>3.957</b>	<b>328</b>	<b>215</b>	<b>5.936</b>	<b>2,290,108</b>

\* System Wide

PROJECT NAME	\$	% COMPLETE	DATE
SSES 2012	\$275,543	100%	7/2013
SSES 2013	\$457,098	100%	6/2014
SSES 2014	\$486,133	100%	3/2015
SSES 2015	\$534,621	100%	3/2016
SSES 2016	\$549,062	100%	2/2017
SSES 2017	\$679,258	91%	12/2017
<b>TOTAL</b>	<b>\$2,981,715</b>		



Following is a map delineating the schedule of SSES fieldwork.





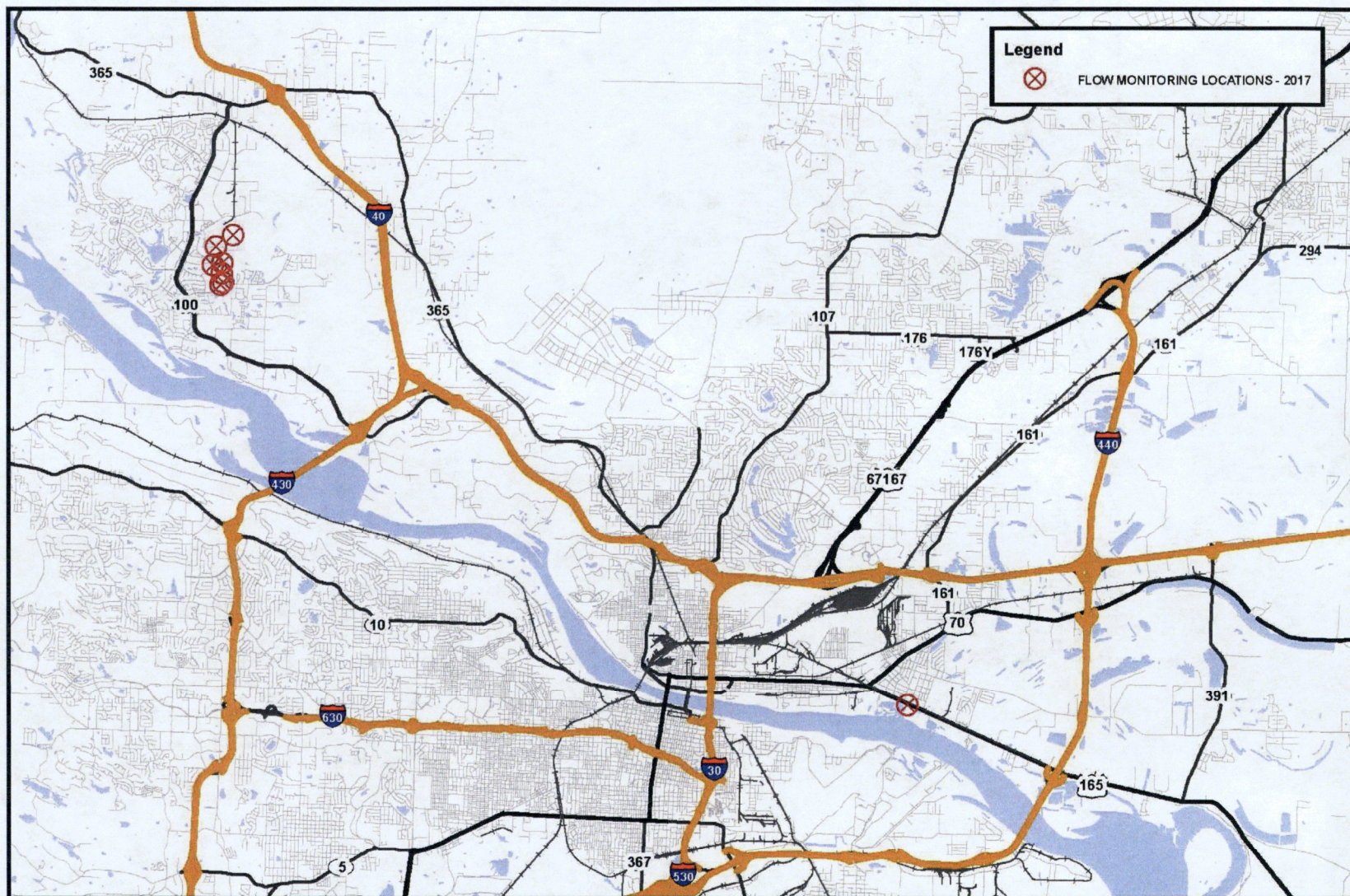
D. SSES, Pumping Station, Capacity Assessment, and Hydraulic Model Evaluation Report

The Masterplan 2011 included a “Capacity, Management, Operations, and Maintenance Self-Assessment Report”, “Flow Monitoring “, and “Hydraulic Model” of the North Little Rock Wastewater Utility’s facilities. This information, along with staff input, was used to develop the capital improvements plan.

NLRW’s geographical information system has been utilized to subdivide the collection system into sub-basins or “sewersheds” of manageable size. SSO data for non-capacity related overflows is being used to focus the Utility’s cleaning efforts to the sewersheds with the highest number of non-capacity related overflows.

The following map (Flow Monitoring Locations) documents the efforts to collect flow data prior to and after completion of rehabilitation projects during the calendar year.





## North Little Rock Wastewater Flow Monitoring Locations - 2017



Printed 1/9/18

The data contained herein was compiled from various sources for the sole use and benefit of the North Little Rock Waste Water Utility. Any use of the data by anyone other than the North Little Rock Waste Water Utility is at the sole risk of the user, and by acceptance of this data, the user does hereby hold the North Little Rock Waste Water Utility and the City of North Little Rock harmless and without liability from any claims, costs, or damages of any nature against the North Little Rock Waste Water Utility and the City of North Little Rock, including cost of defense arising from improper use of the data or use by another party. Acceptance or use of this data is done without any expressed or implied warranties.

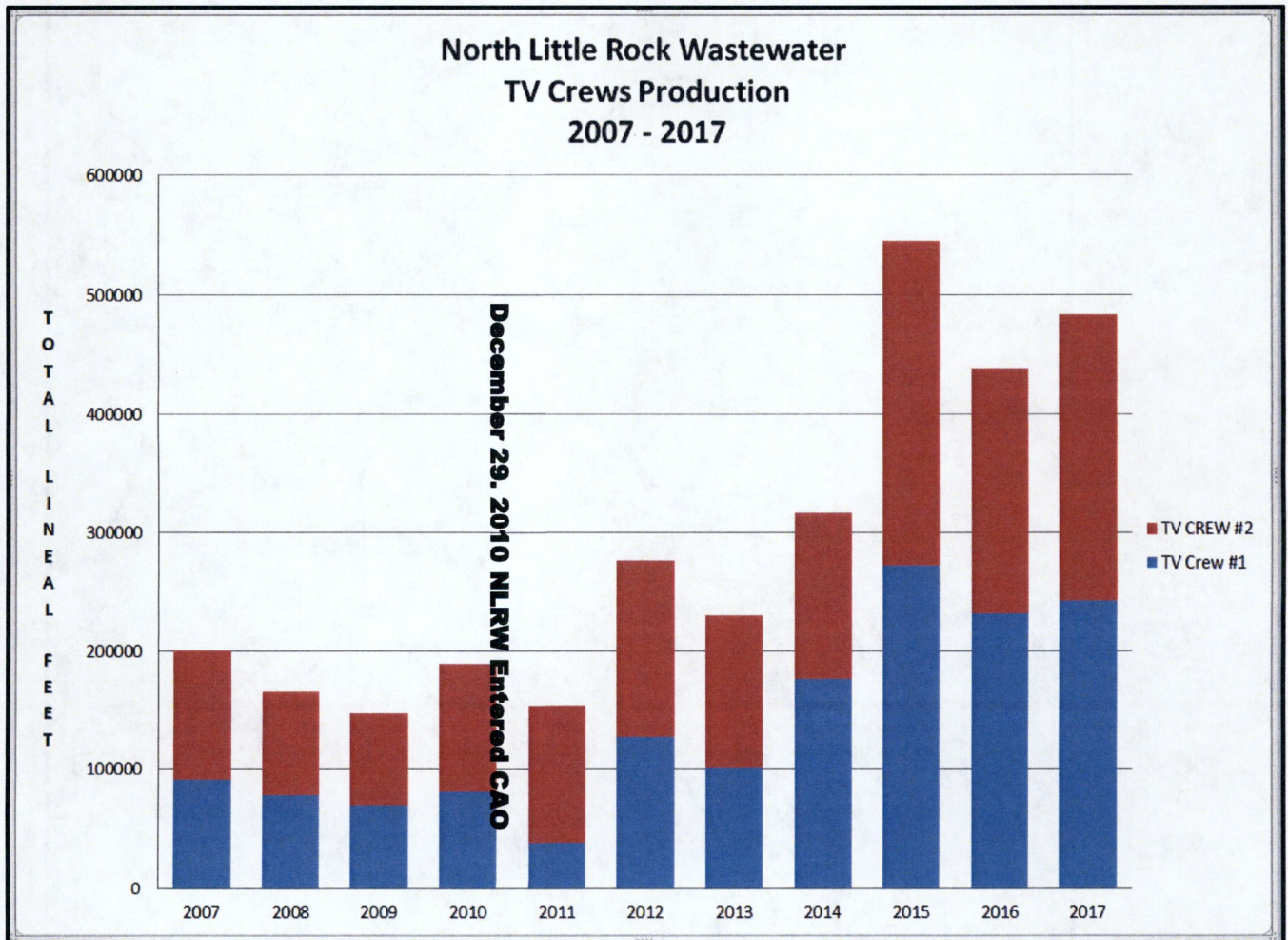


E. Collection System and Wastewater Treatment Plant Remedial Measures Plan

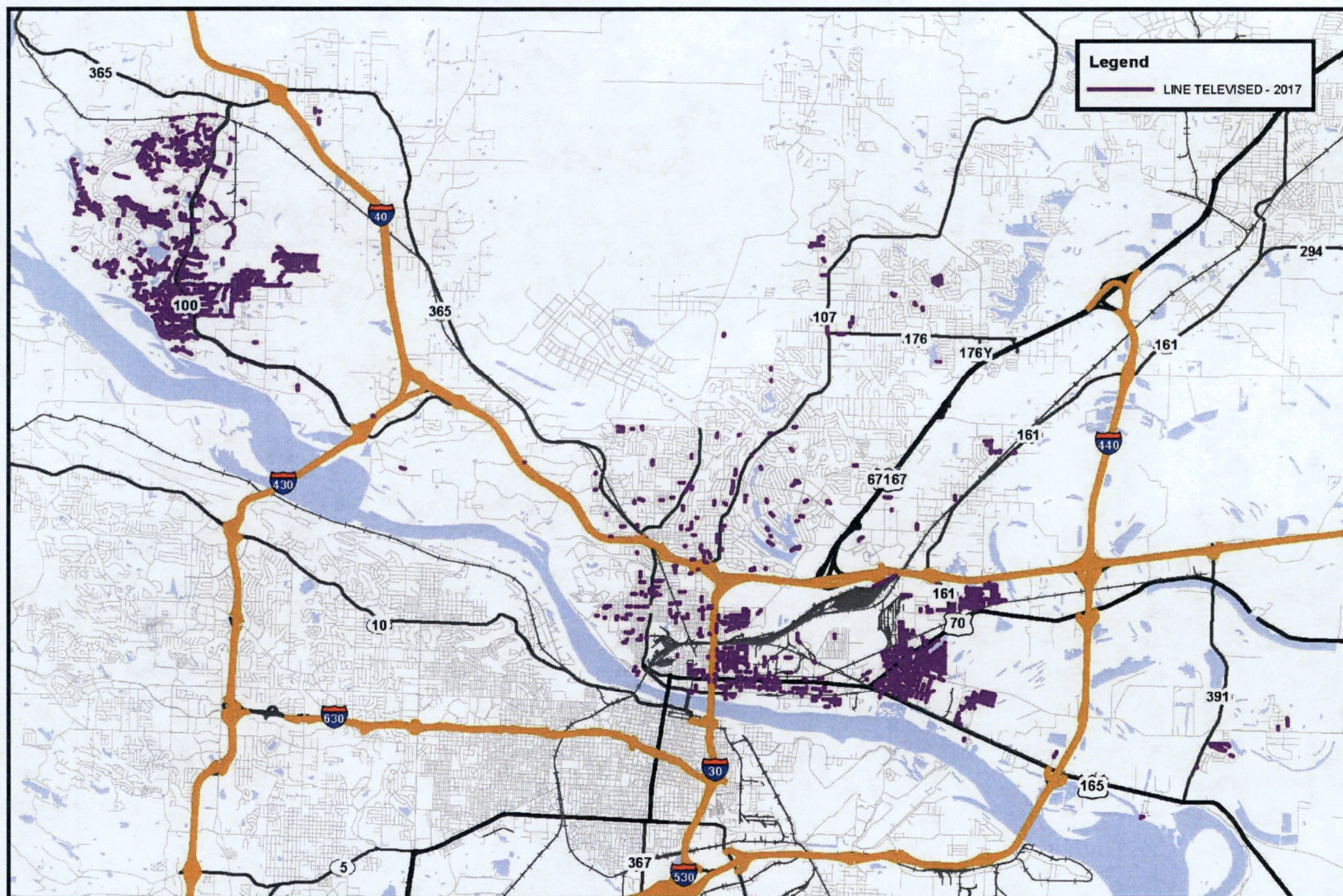
Following is an update of progress on specific collection system and WWTP Remedial Measures:

The remedial measures plan generally consists of measures involving existing equipment, personnel and practices which can be modified to reduce the occurrence of SSOs.

- i. Increase production of TV and cleaning crews
  - a. The following graph and map document the efforts to increase production of the TV crews in targeted areas.







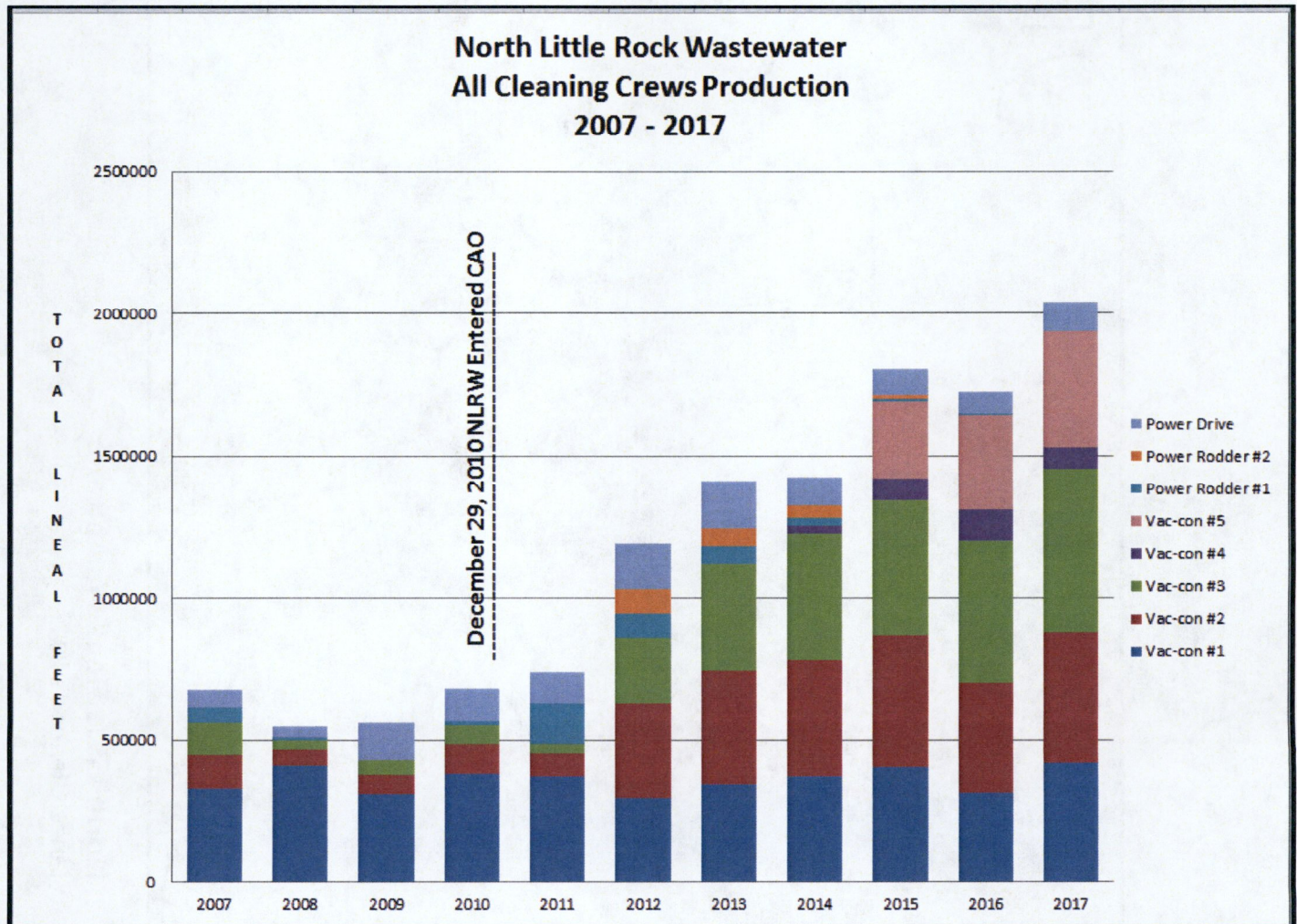
  
 Printed 1/9/18

## North Little Rock Wastewater Closed Circuit Television Inspection - 2017

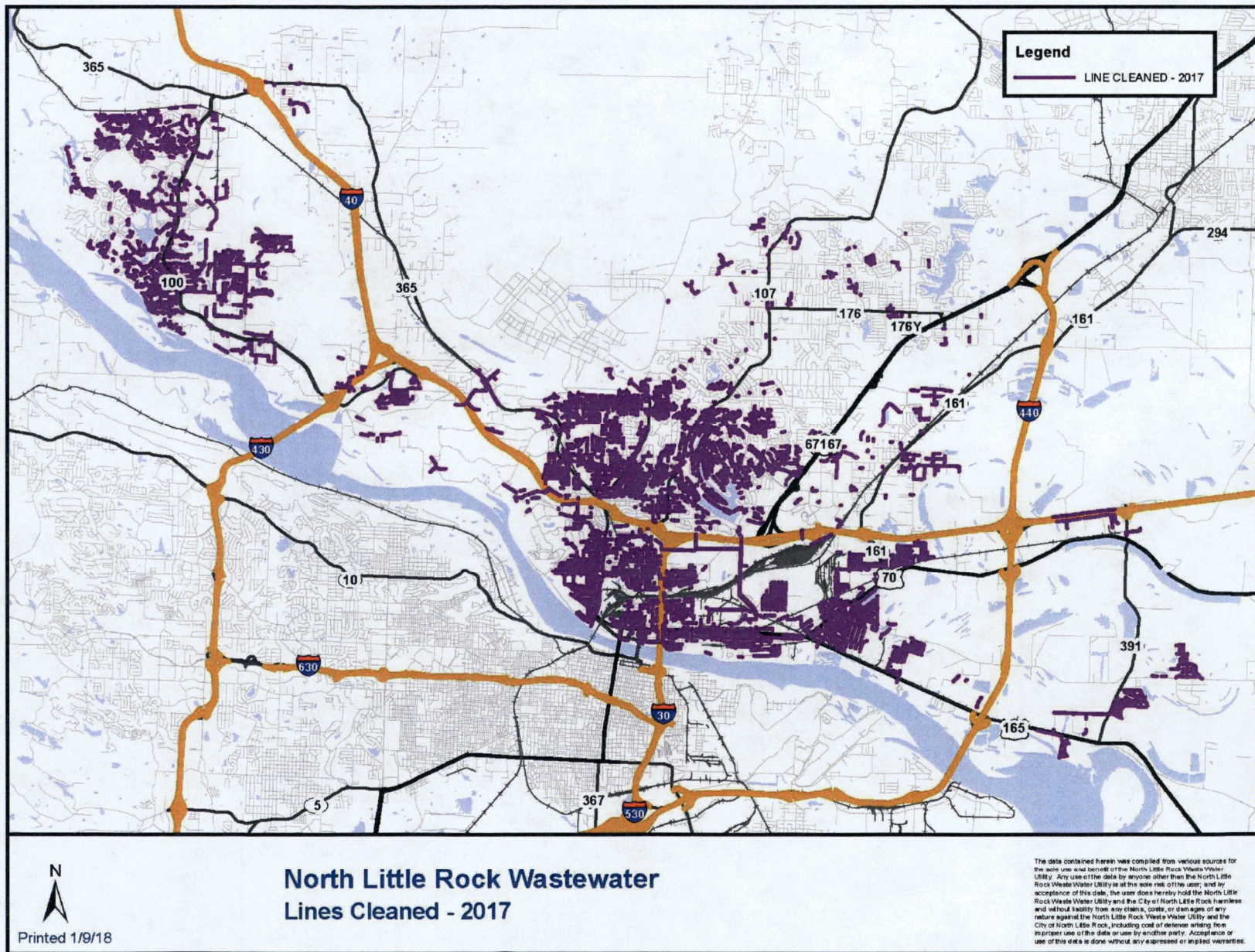
The data contained herein was compiled from various sources for the sole use and benefit of the North Little Rock Waste Water Utility. Any use of the data by anyone other than the North Little Rock Waste Water Utility is at the sole risk of the user, and by acceptance of this data, the user does hereby hold the North Little Rock Waste Water Utility and the City of North Little Rock harmless and without liability from any claim, cost, or damages of any nature against the North Little Rock Waste Water Utility and the City of North Little Rock, including cost of defense arising from improper use of the data or use by another party. Acceptance or use of this data is done without any expressed or implied warranties.



- b. The following graph and map document the efforts to increase production of the cleaning crews in targeted areas.









- ii. Increase production by adding additional crews or personnel

A fifth Vac-con was purchased and one of the Power Rodder Crews was converted to a Vac-con Crew in June 2015. NLRW now operates the following cleaning crews:

4 Vac-con Crews  
1 Power Rodder Crew  
1 Power Drive Crew

Vac-con #4 is kept as a spare and is shared by all Vac-con Crews when their equipment is down for maintenance.

- iii. Provide emergency response connections and Supervisory Control and Data Acquisition (SCADA) systems at pump stations and treatment plants.

Following the ice storms in December 2000, the Utility implemented a program to provide emergency pumping connections at all the pump stations. The connections allow a trailer mounted, suction lift pump to draw water from the wetwell and pump directly into the force main, thus by-passing the permanent pumping equipment during emergency situations such as power and equipment failures.

NLRW has four trailer mounted generators which can be stationed for temporary service at facilities with transfer switches.

Permanent mounted generators and automatic transfer switches are being incorporated in new facilities and in other select facilities to minimize potential SSOs related to power outages.

The following tables identify emergency response connections at pump stations and treatment plants.

#### Treatment Plant Emergency Response Connections

TREATMENT PLANT NAME	LOCATION	PUMP CONNECTION	TRANSFER SWITCH	GENERATOR	VOLTS
FAULKNER LAKE INFLUENT	7400 BAUCUM PIKE	N	AUTO	Y	480 3Ø
FAULKNER LAKE BLOWER FACILITY	7400 BAUCUM PIKE	N	AUTO	Y	480 3Ø
FAULKNER LAKE ADMIN BLDG	7400 BAUCUM PIKE	N	AUTO	Y	208V 240V
FAULKNER LAKE LAB BLDG	7400 BAUCUM PIKE	N	AUTO	Y	240V 480V
WHITE OAK INFLUENT	6000 HEILMAN	N	Y	N	480 3Ø
WHITE OAK TREATMENT PLANT	6000 HEILMAN	N	N	N	480 3Ø
FIVE MILE INFLUENT	5601 E 54TH STREET	N	AUTO	Y	480 3Ø
FIVE MILE EFFLUENT	5601 E 54TH STREET	N	AUTO	Y	480 3Ø
MAUMELLE TREATMENT PLANT	425 HYMAN DRIVE	N	AUTO	Y	480 3Ø



Yellow highlighted pump stations have auxiliary generators and transfer switches or Omnisite SCADA added in 2017.

NORTH LITTLE ROCK WASTEWATER PUMP STATION EMERGENCY RESPONSE CONNECTIONS								
PUMP STATION #	PUMP STATION NAME	PUMP CONNECTION	TRANSFER SWITCH	GENERATOR	VOLTS	EXISTING SCADA TYPE	SCADA UNIT #	
402	BRIDGEWAY HOSPITAL #2	Y			230 1Ø	OMNISITE	30826	
403	CLAYTON CHAPEL	Y	AUTO	Y	240 3Ø	OMNISITE	30827	
405	DELTA LAWN	Y	AUTO	Y	240 3Ø	OMNISITE	30284	
408	DIXIE (10TH ST)	Y	AUTO	Y	240 3Ø	OMNISITE	30806	
407	HWY 107	Y	AUTO	Y	240 3Ø	OMNISITE	30832	
408	LANSBROOK	Y	Manual		240 3Ø	OMNISITE	30270	
409	MARYLAND EAST	Y	AUTO	Y	240 3Ø	OMNISITE	30833	
410	MARYLAND PLACE	Y			240 1Ø	OMNISITE	31056	
413	COCK-OF-THE-WALK (#2)	Y			480 3Ø	OMNISITE	11153	
414	MAYBELINE	Y	AUTO	Y	480 3Ø	OMNISITE	30286	
415	M CALMONT	Y			240 3Ø	OMNISITE	31059	
416	MID-STATE	Y			240 3Ø	OMNISITE	31077	
417	OAKBROOK	Y			480 3Ø	OMNISITE	10303	
418	PINE TREE				240 1Ø	OMNISITE	31080	
419	SHILLOUT BAYOU		AUTO	Y	480 3Ø	IGNITION		
420	SHORTER COLLEGE	Y			240 3Ø	OMNISITE	31107	
421	BURNS PARK EAST				240 3Ø		NA	
422	BURNS PARK WEST				240 1Ø		NA	
423	LAKEWOOD PLACE				230 1Ø	OMNISITE	31104	
424	I 440 INDUSTRIAL PARK	Y			208 3Ø	OMNISITE	30283	
425	AUSTIN LAKE	Y			480 3Ø	OMNISITE	31105	
426	FRONTIER DR.- MORGAN	Y	AUTO	Y	480 3Ø	OMNISITE	31106	
427	MARCHE-MORGAN	Y			480 3Ø	OMNISITE	30808	
429	BAUCUM INDUSTRIAL	Y			208 3Ø	OMNISITE	30282	
430	WILCOX	Y	AUTO	Y	480 3Ø	OMNISITE	30266	
431	QUAPAW	Y	AUTO	Y	240 3Ø	OMNISITE	30285	
432	HWY 365-SHERMAN RD	Y	AUTO	Y	480 3Ø	OMNISITE	30810	
433	GAP CREEK	Y	AUTO	Y	240 3Ø	OMNISITE	30805	
434	HARRIS INDUSTRIAL PARK	Y			480 3Ø	OMNISITE	30268	
435	BURNS PARK RV PARK				240 1Ø		NA	
436	BURNS PARK LANDSCAPING				240 1Ø		NA	
437	BURNS PARK SOUTH				240 1Ø		NA	
438	HILL LAKE		AUTO	Y	480 3Ø	OMNISITE	30287	
439	BURNS PARK SOCCER FIELDS				230 1Ø		NA	
440	COLLINS INDUSTRIAL PARK	Y	AUTO	Y	480 3Ø	OMNISITE	30562	
441	COUNTS MASSIE	Y	AUTO	Y	480 3Ø	OMNISITE	30807	
442	CHAPEL RIDGE	Y			240 3Ø	OMNISITE	30561	
443	RIXIE PUMP-HWY 181	Y	AUTO	Y	480 3Ø	OMNISITE	30552	
444	RIXIE PUMP-LUCKY DR.	Y	AUTO	Y	480 3Ø	OMNISITE	30553	
445	RIXIE PUMP- TRAMMEL RD	Y	AUTO	Y	480 3Ø	OMNISITE	30556	
446	RIXIE PUMP-RIXIE RD- RR TRACK	Y			480 3Ø	OMNISITE	30555	
447	CYPRESS CROSSING	Y	AUTO	Y	480 3Ø	OMNISITE	30269	
448	CRYSTAL BAY	Y			480 3Ø	OMNISITE	30809	
449	TRAMMEL ESTATES	Y			240 1Ø	OMNISITE	30557	
450	EUREKA GARDEN & 46TH	Y	AUTO	Y	240 3Ø	OMNISITE	30560	
451	EUREKA GARDEN RD	Y	AUTO	Y	240 3Ø	OMNISITE	30558	
452	EUREKA GARDEN & JUDY LANE	Y	Manual		240 3Ø	OMNISITE	30559	
453	FAULKNER CROSSING 5	Y	AUTO	Y	480 3Ø	OMNISITE	30288	
601	BOURIES				230 1Ø	OMNISITE	10718	
602	C. C. BALLFIELDS	Y	AUTO	Y	480 3Ø	OMNISITE	10570	
603	COUNTS MASSIE #2				230 3Ø	OMNISITE	11026	
604	DIAMOND POINT				480 3Ø	OMNISITE	11206	
605	DURANGO				480 3Ø	OMNISITE	11181	
606	HIGH SCHOOL				480 3Ø	OMNISITE	11176	
607	LAWRENCE				230 1Ø	OMNISITE	11020	
608	MARANES				230 1Ø	OMNISITE	11009	
609	MASTERS PLACE				230 1Ø	OMNISITE	11023	
610	MAUMELLE VALLEY	Y	AUTO	Y	480 3Ø	OMNISITE	11014	
611	MAUMELLE WOODS				480 3Ø	OMNISITE	11146	
613	MURPHY DRIVE		AUTO	Y	480 3Ø	Wonderware		
614	NAYLOR				480 3Ø	OMNISITE	11134	
615	NEW BEDFORD		AUTO	Y	480 3Ø	OMNISITE	11206	
616	NORFOLK				230 1Ø	OMNISITE	11193	
617	ODOM/BLUE MOUNTAIN				230 1Ø	OMNISITE	11141	
618	OSAGE FALLS				230 3Ø	OMNISITE	11155	
618	OSAGE HILLS		Manual		230 3Ø	OMNISITE	11156	
620	PAUSADES				480 3Ø	OMNISITE	11138	
621	PONCA				230 3Ø	OMNISITE	11196	
622	RIDGELAND				230 1Ø	OMNISITE	11021	
623	RIDGELAND/ODOM				230 1Ø	OMNISITE	11179	
624	RIVER RUN				230 3Ø	OMNISITE	11189	
625	SEMINOLE EAST	Y	AUTO	Y	480 3Ø	OMNISITE	10331	
626	SEMINOLE WEST	Y	AUTO	Y	230 1Ø	OMNISITE	11192	
627	TOWN CENTER				230 1Ø	OMNISITE	11170	

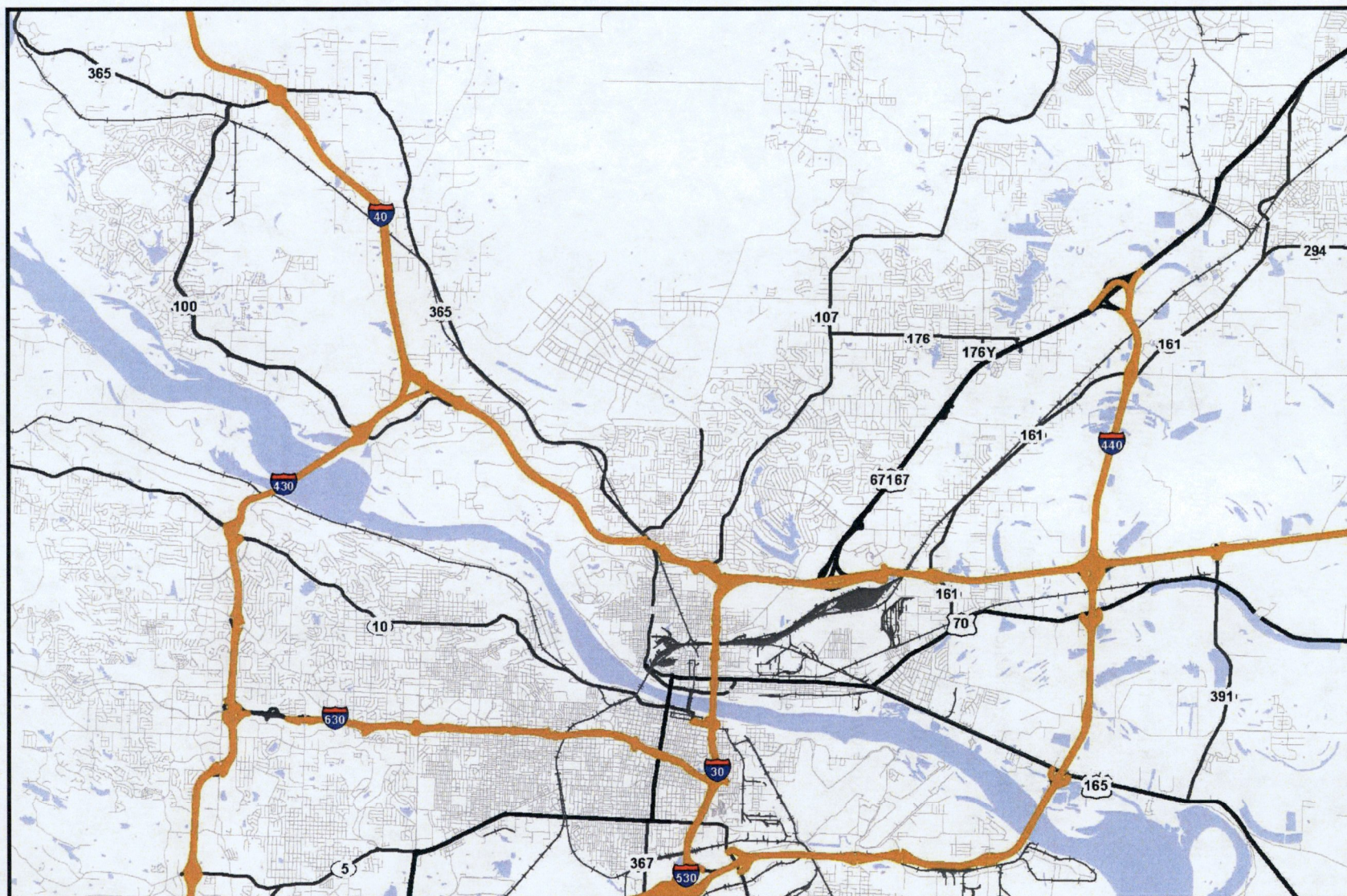


- iv. Identify areas subject to building/private property backups.

NLRW utilizes trouble calls to initiate an investigation to determine areas subject to building/private property backups. A trouble call attributed to "high water" and resulting in slow draining fixtures or backups in buildings or property initiates a work order to the Civil Engineer. The Civil Engineer conducts an investigation to determine the cause of the backup and documents the need for corrective action. The Civil Engineer documents the need for a backwater valve and sends a letter to the property owner. A copy of the letter is given to the GIS Administrator for entry into the GIS database.

Following is a map identifying the addresses investigated in the calendar year for the need for backwater valves.





Printed 1/9/18

## North Little Rock Wastewater Backwater Valve Investigations - 2017

The data contained herein was compiled from various sources for the sole use and benefit of the North Little Rock Waste Water Utility. Any use of the data by anyone other than the North Little Rock Waste Water Utility is at the sole risk of the user, and by acceptance of this data, the user does hereby hold the North Little Rock Waste Water Utility and the City of North Little Rock harmless and without liability from any claims, costs, or damages of any nature against the North Little Rock Waste Water Utility and the City of North Little Rock, including cost of defense arising from improper use of the data or use by another party. Acceptance or use of this data is done without any expressed or implied warranties.



v. Public education

In 2012, NLRW expanded its Grease Reduction Program to include additional items to 'not' put down the drain and has renamed the program "Maintain YOUR Drain." Expansion of the Grease Reduction Program was largely brought about by increased problems associated with so-called "flushable wipes."

A summary of the activities conducted by the "Maintain YOUR Drain" staff, during the calendar year is attached, as well as copies of the mailers.

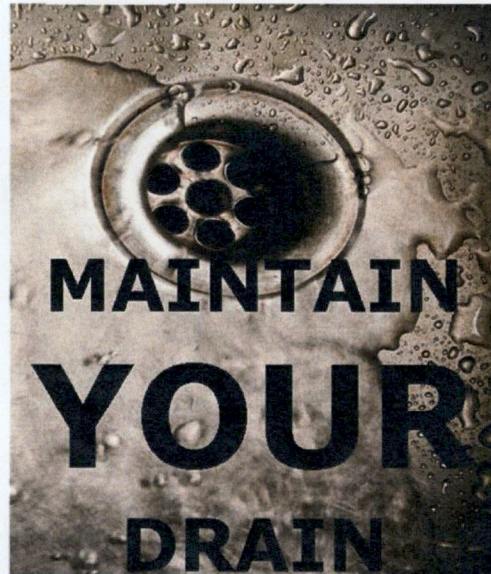
Staff designed educational decals and had them installed on the Vac-cons and TV vans. The concept is to use the trucks as moving billboards and to put the message where the work is (e.g. A customer sees the Vac-con cleaning a sewer line and the sign on the side of the Vac-con says "Wipes clog pipes. Don't flush wipes!" or "Maintain YOUR Drain! Don't pour grease down the drain!")

North Little Rock Wastewater			
Maintain YOUR Drain Program			
(Educating the public on what "NOT" to put down the drain.)			
Date	Group Name	Location	Approximate # of Attendees
04/10/17	Central Arkansas Christian	10900 N Rodney Parham Road, Little Rock, AR	24
05/10/17	Crystal Hill Elementary	5001 Northshore Dr, North Little Rock, AR	112
09/06/17	Oakbrooke Elementary	2200 Thornhill Dr, Sherwood, AR 72120	72
09/28/17	Oak Grove Elementary	5703 Oak Grove Rd, North Little Rock, AR 72118	52
10/16/17	Silver Shamrocks-Retired Group	211 W 19th St, North Little Rock, AR 72114	15
Total Attendees 2017			275
April-17	61,500 Mailers were sent out with information on how to dispose of grease properly. It also contained information on what to not put down the drain.		
Aug-17	61,500 Mailers were sent out with information on how to dispose of grease properly. It also contained information on what to not put down the drain.		
Dec-16	61,500 Mailers were sent out with information on how to dispose of grease properly. It also contained information on what to not put down the drain.		
In addition, children at the schools were given bracelets with the North Little Rock Wastewater Logo and a message that reads "Protect Our Water" as a reminder of how the dangers of improper grease disposal can harm our environment. Informative brochures are handed out at all meetings with material on grease and pharmaceutical disposal.			





501-945-7186



## Grease

Never pour grease or cooking oil down sink drains or garbage disposals.

Place small amounts of grease and oil in the trash.

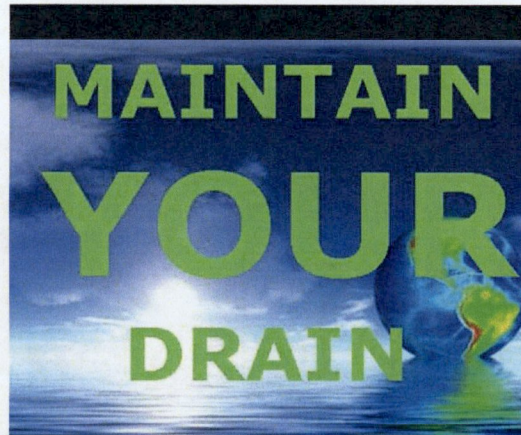
Large containers of cooking oil can be recycled at

12th & Willow  
North Little Rock, AR 72114  
(501) 371-8345

[WWW.NLR.AR.GOV](http://WWW.NLR.AR.GOV)



501-945-7186



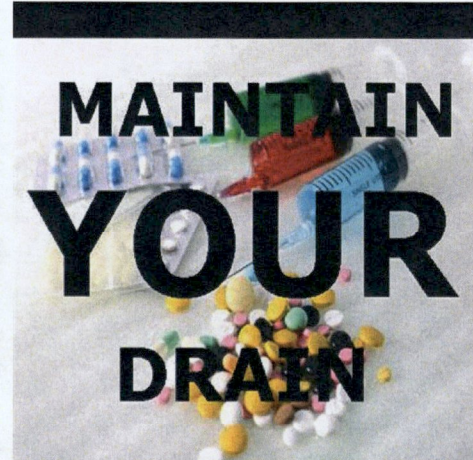
Do **Not** Put Down the  
Drain or Toilet

Baby Wipes  
Clothing/Rags  
Paper Towels  
Automotive Oils  
Pharmaceuticals  
Cosmetics/Fragrances  
Sunscreen Products  
Chemicals

[WWW.NLR.AR.GOV](http://WWW.NLR.AR.GOV)



501-945-7186



## Pharmaceuticals

Do **NOT** flush them down the toilet.

Mix old pharmaceuticals with used coffee grounds or kitty litter.

Place them in a sealable container and throw them in the trash.

OR

Contact local law enforcement for community take-back programs.

[WWW.NLR.AR.GOV](http://WWW.NLR.AR.GOV)







vi. Treatment plant stormwater runoff protection

Part of NLRW's effort to comply with treatment plant stormwater runoff protection included the addition of "Maintenance and Emergency Equipment Storage Facilities." This project included the addition of metal buildings to house maintenance and emergency response equipment.

This project also included the addition of a vehicle wash station, site grading and drainage improvements.

Section B.i provides additional information regarding this project.

vii. Secure funding for Capital Improvement Projects

a. On November 28, 2012, NLRW closed on a \$21,000,000 loan with the Arkansas Natural Resources Commission. As of January 20, 2017, these loan funds have been fully expended.

b. On October 25, 2016, NLRW closed on a \$30,000,000 loan with the Arkansas Natural Resources Commission. Through December 31, 2017, North Little Rock Wastewater has spent \$6,930,011 of the \$30,000,000 loan.

viii. Point Repairs

NLRW added a fourth construction crew in 2016 to reduce response time for disconnects which were building up a backlog of work orders. This crew may also assist with point repairs and other excavation related repairs depending on the work load.

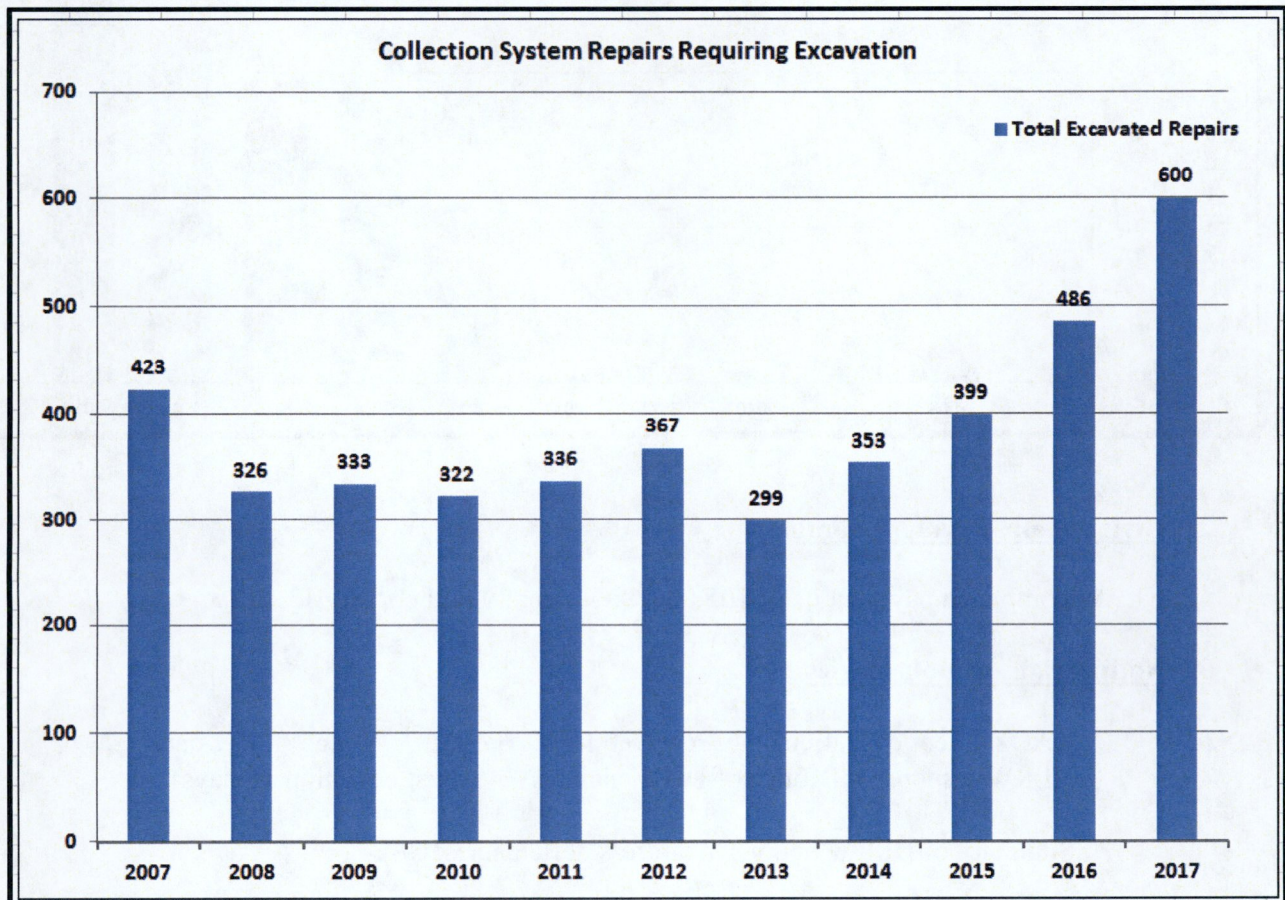
Outside services contractors may be used for certain repairs depending on work load, schedule and need for specialized services. Specialized services include repairs beneath the water table, deep excavations, repairs complicated by other structures, repairs involving large diameter pipelines, etc.

Following is a summary of repairs completed in the collection system requiring excavation:



<b>SUMMARY of Collection System Repairs Requiring Excavation</b>						
<u>Year</u>	<u>Point Repairs</u>	<u>New Manholes</u>	<u>New Line Segments</u>	<u>Disconnects</u>	<u>Repairs by Outside Services Contractors</u>	<u>TOTAL</u>
2007	316	30	70	7	n/a	423
2008	280	17	8	21	n/a	326
2009	299	13	20	1	n/a	333
2010	289	24	7	2	n/a	322
2011	316	12	6	0	2	336
2012	337	22	6	1	1	367
2013	273	18	5	0	3	299
2014	332	11	10	0	0	353
2015	364	15	8	4	8	399
2016	381	26	7	66	6	486
2017	371	24	13	191	1	600
						<b>2,840</b>

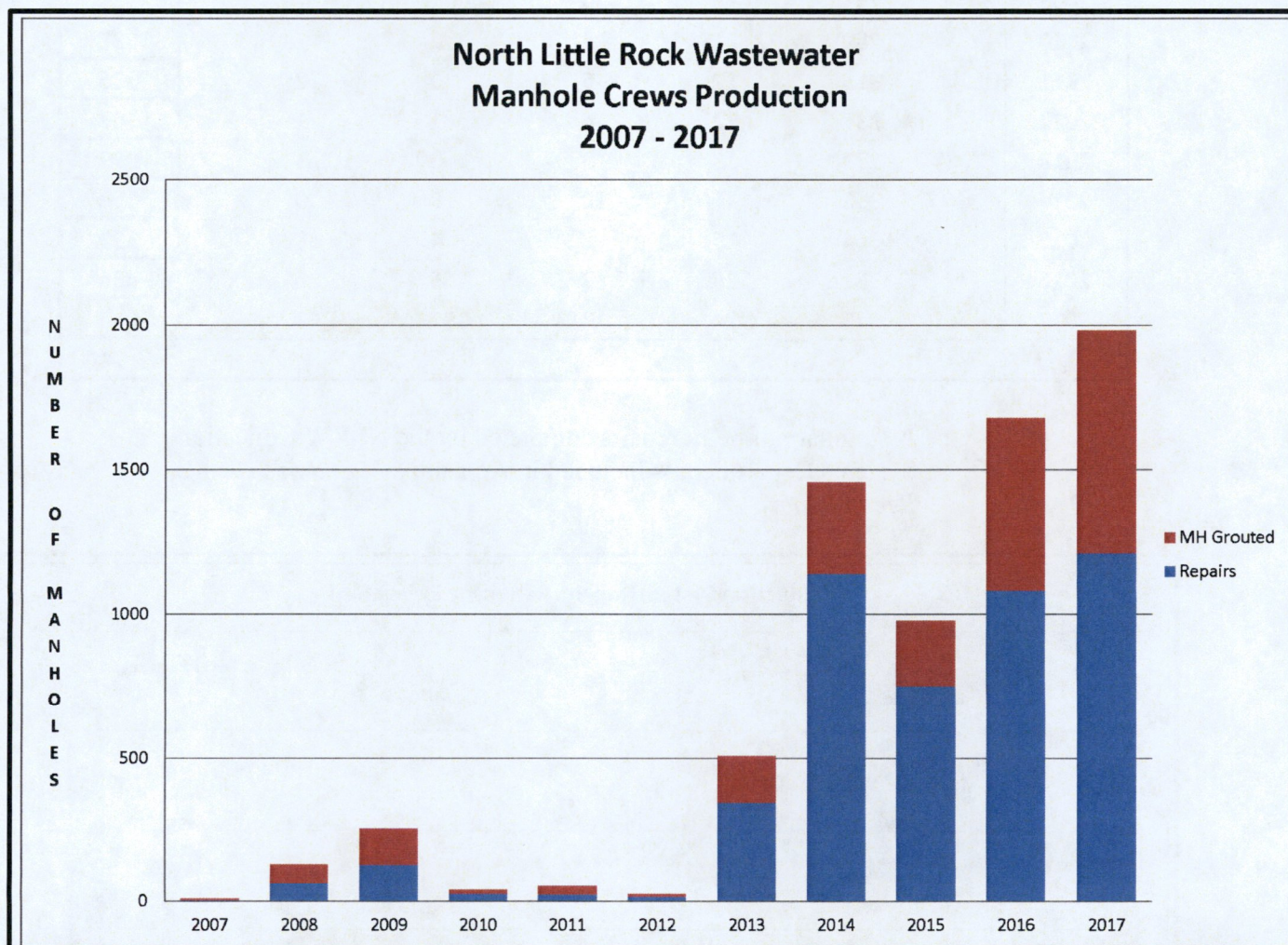
A summary of point repairs completed by the NLRW Collection Systems Department is included in Appendix C. *End of Year Work Recap Report.*





ix. Manhole Repairs

Following is a graph of manhole repairs completed in the collection system:



2. Civil Penalty Payment Summary

NLRW completed payment of a \$105,000 Civil Penalty on February 13, 2013.

3. Notifications of Deficiencies

CAO Notices of Deficiencies received from ADEQ: **None** (no. & date)

NLRW response to Notice of Deficiencies: N/A (must be within 15 days)

Summary of NLRW actions to address deficiencies: N/A



4. **Compliance Delays**

Notifications of Compliance Delays submitted to ADEQ: **None** (no. & date)

Length of Compliance Delay: **N/A**

Cause of Compliance Delay: **N/A**

Measures Taken to Minimize Delay: **N/A**

Timetable for Implementing Additional Measures: **N/A**

5. **Certification**

As required by the Order and Agreement, Paragraph 3, North Little Rock Wastewater certifies that we are complying with the ADEQ-approved Wastewater Master Plan.

Respectfully Submitted,

A handwritten signature in blue ink, appearing to read "M. Wilkins", followed by a horizontal line.

Marc E. Wilkins, PE  
Director  
North Little Rock Wastewater



## **APPENDIX**

**A. Annual Overflows by Category**

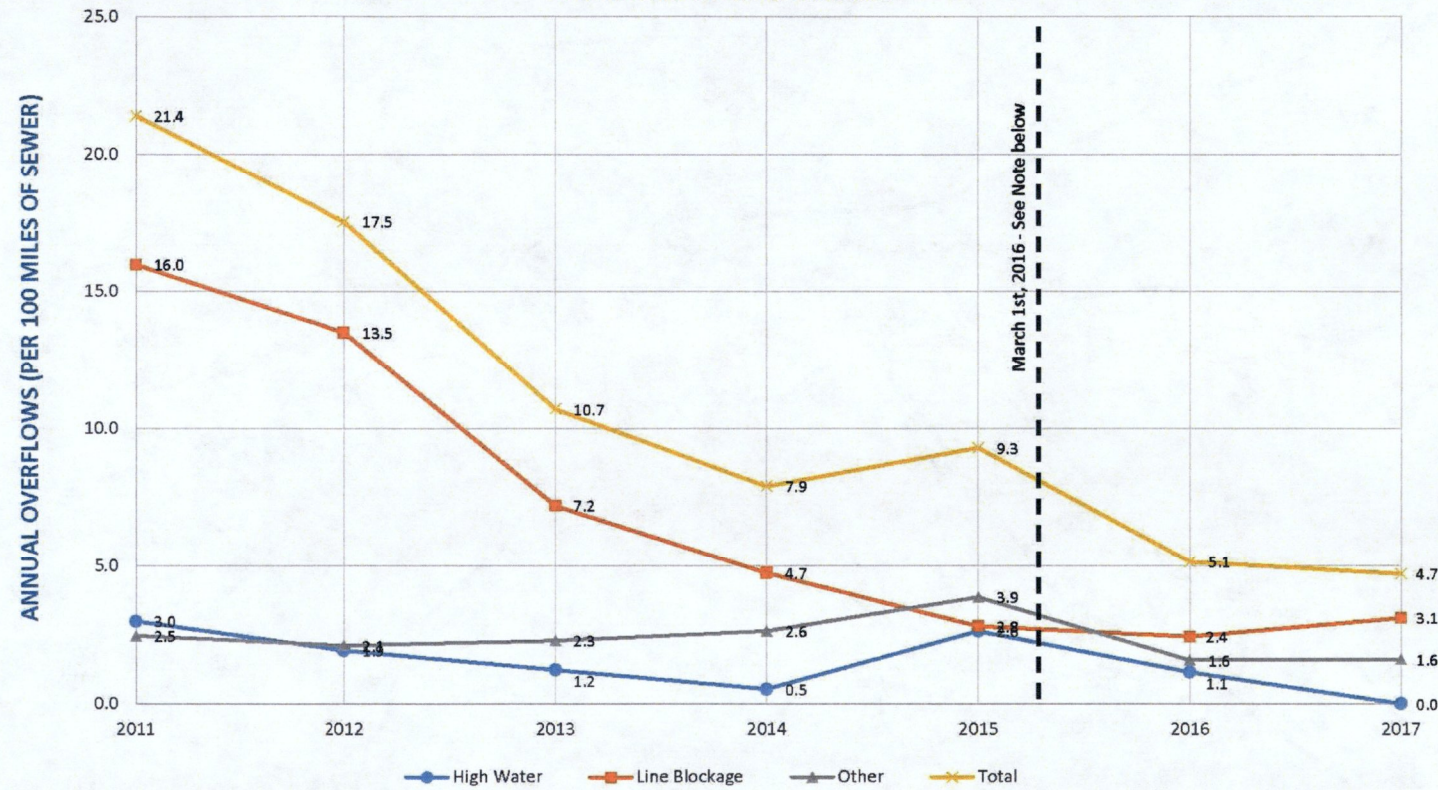
**B. SSO Locations 2017**

**C. 2017 Year-to-Date Work Recap Report (Collection Systems Department)**

**D. Collection System Rehabilitation**



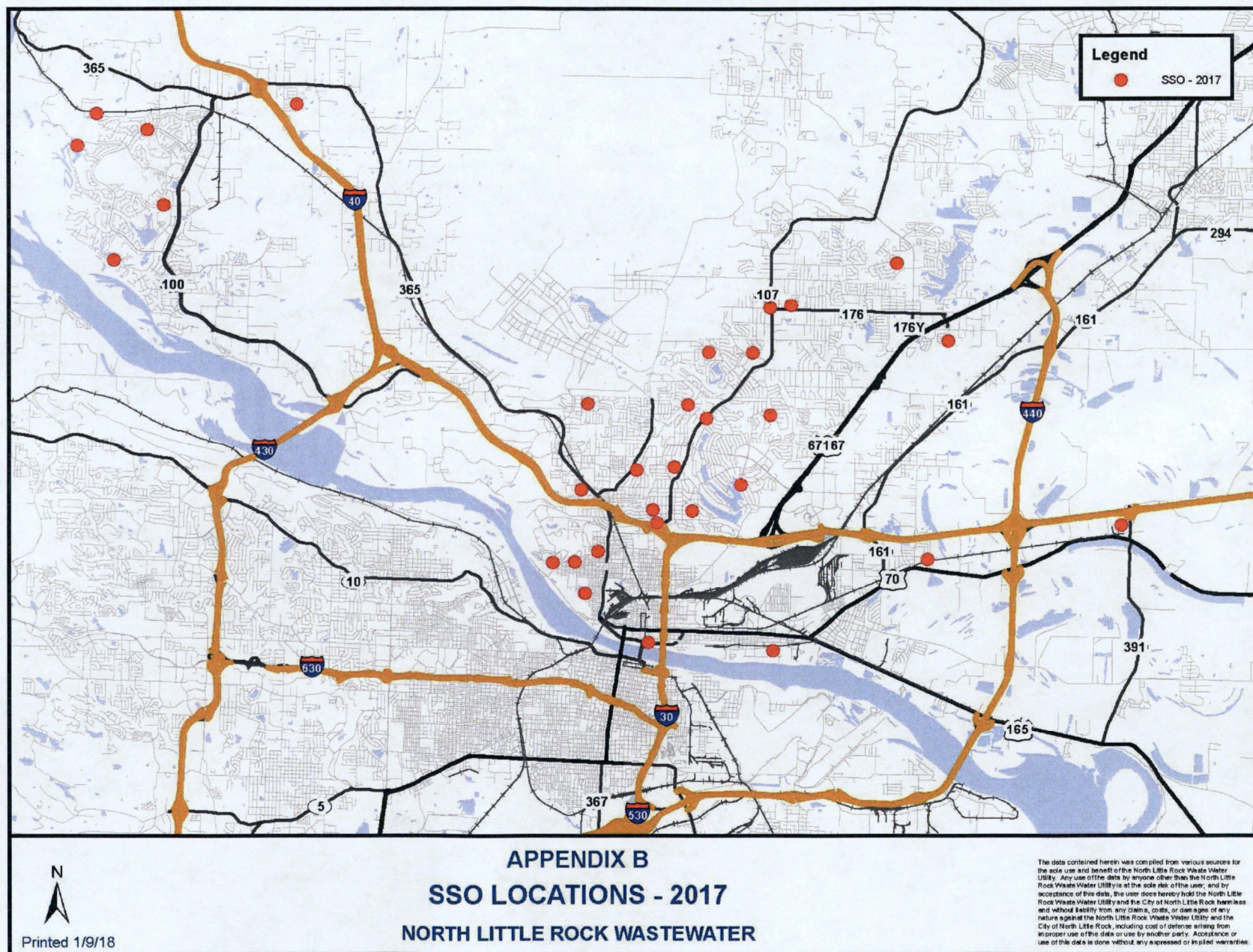
APPENDIX A  
ANNUAL OVERFLOWS BY CATEGORY (PER 100 MILES OF SEWER)  
NORTH LITTLE ROCK WASTEWATER



Note: On March 1st, 2016, the NLRW assumed O&M responsibilities of the Maumelle SID 500 of Pulaski County (d/b/a MWM). The MWM collection system contained 131 miles of pipeline.  
NLRW collection system prior to March 1st, 2016: 572 miles  
NLRW collection system following March 1st, 2016: 703 miles

Jim Milum  
Printed 1/10/18







# APPENDIX C

## North Little Rock Wastewater

### 2017 Year-To-Date Work Recap Report

Crews:	Jan	Feb	Mar	Apr	May	Jun	Jul	Aug	Sep	Oct	Nov	Dec	Y T D
<b>MANHOLE:</b>													
Disconnects	0	0	0	0	0	0	0	0	0	0	0	0	0
Taps	0	0	0	0	0	0	0	0	0	0	2	0	2
Repairs	64	81	98	0	77	57	54	160	227	147	164	81	1,210
# of MH's Grouted	30	68	47	47	7	36	47	93	9	152	158	78	772
# of Coats	0	0	0	0	0	0	0	0	0	0	0	0	0
MH Depth (Ft/In)	0.0	6.0	0.0	0	37.0	90.5	26.5	57.0	50.0	6.0	25.5	0.0	299
# of Bags of Grout	6	5	10	0	20	25	6	13	27	41	19	10	182
<b>POWER DRIVE:</b>													
# of Ft Cleaned	6,756	15,882	6,735	7,783	4,863	3,701	10,413	11,751	8,876	9,051	7,859	8,756	102,426
<b>PWR RODDER #1:</b>													
# of Ft Cleaned	0	0	0	0	0	0	0	0	0	0	0	0	0
<b>REPAIR #1:</b>													
Repairs	5	8	15	10	9	4	4	8	11	3	6	1	84
New Manholes	1	0	0	0	1	2	3	2	0	1	1	1	12
New Lines	1	0	0	0	1	1	2	1	0	1	1	1	9
Disconnects	0	0	1	0	0	0	0	0	0	0	0	0	1
Taps	0	0	2	1	0	1	1	2	2	1	0	0	10
Miscellaneous	2	4	9	6	3	0	5	2	8	0	3	0	42
<b>REPAIR #2:</b>													
Repairs	17	15	11	14	8	8	10	13	13	11	8	9	137
New Manholes	0	0	0	0	0	0	0	0	0	0	0	0	0
New Lines	0	0	0	0	0	0	0	0	0	0	0	0	0
Disconnects	0	1	0	0	0	0	1	0	0	0	0	1	3
Taps	1	0	0	1	2	0	3	1	0	0	0	2	10
Miscellaneous	8	4	3	10	3	9	5	10	1	0	1	3	57
<b>REPAIR #3:</b>													
Repairs	9	11	11	12	7	4	8	4	2	7	3	2	80
New Manholes	1	0	0	0	0	2	0	1	1	3	4	0	12
New Lines	0	0	0	0	0	0	0	0	0	0	3	0	3
Disconnects	0	1	0	0	0	0	0	0	0	0	0	0	1
Taps	0	2	2	0	1	2	0	0	0	0	0	0	7
Miscellaneous	0	17	8	7	5	4	3	1	1	1	0	3	50
<b>REPAIR #4:</b>													
Repairs	4	7	9	3	13	4	5	6	5	6	4	4	70
New Manholes	0	0	0	0	0	0	0	0	0	0	0	0	0
New Lines	0	0	0	1	0	0	0	0	0	0	0	0	1
Disconnects	25	15	10	10	13	13	10	14	24	24	10	18	186
Taps	0	0	0	0	0	1	0	0	0	0	0	0	1
Miscellaneous	1	1	9	3	7	15	4	6	2	4	2	4	58
<b>TROUBLE:</b>													
# of Ft Cleaned	1,801	815	572	511	773	574	0	130	80	107	1,222	399	6,984
Stop-Ups	50	40	47	31	39	7	22	25	32	31	39	29	392
Private Lines	33	31	33	21	30	23	17	21	21	20	26	19	295
Cave-Ins	6	1	3	7	11	1	2	0	4	1	4	1	41
Flooded Houses	0	0	0	0	0	0	0	0	0	0	0	0	0
Miscellaneous	39	43	48	46	53	52	61	72	45	58	44	25	586
Total Calls	97	83	99	81	103	83	84	96	81	89	87	54	1,037
<b>VACCON #1:</b>													
# of Ft Cleaned	37,222	36,816	40,641	37,587	36,029	32,035	35,929	44,220	35,343	33,068	27,134	21,875	417,899
<b>VACCON #2:</b>													
# of Ft Cleaned	22,978	39,994	41,972	49,039	45,762	43,881	44,740	39,641	34,223	45,273	34,201	17,980	459,684
<b>VACCON #3:</b>													
# of Ft Cleaned	50,961	45,546	46,199	45,189	62,409	31,999	58,888	50,548	54,650	60,244	46,089	22,580	575,302
<b>VACCON #4:</b>													
# of Ft Cleaned	17,567	0	10,715	927	12,822	25,010	1,520	5,139	0	1,517	0	1,976	77,193
<b>VACCON #5:</b>													
# of Ft Cleaned	27,671	22,319	43,157	29,529	27,902	41,854	42,686	41,658	35,078	35,338	31,504	29,919	408,615
<b>T V #1</b>													
# of Ft	19,511	21,420	24,657	14,535	21,301	18,530	21,850	29,761	25,152	19,697	15,136	11,220	242,770
<b>T V #2</b>													
# of Ft	18,483	9,151	21,477	19,663	22,210	28,528	26,824	26,461	22,794	20,167	13,627	11,439	240,824



